

# Universal Handheld Device

## UHD-5102 User's Reference Guide



上揚科技股份有限公司  
SOARING TECHNOLOGY CO. LTD.  
<http://www.sotac.com.tw>

### I. Device Part Illustration

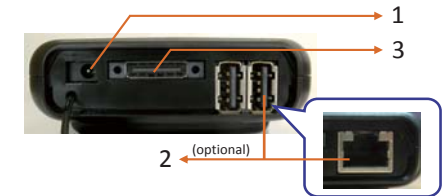
#### A. Main Device

Top View



No.	Part Name
1	LCD Screen
2	Status Indicators
3	Power Button
4	Arrow Keys
5	Key Pad

Rear Side View (Optional)



No.	Part Name
1	DC Jack
2	USB port x 2
3	LAN port
4	Docking Connector

Bottom View



No.	Part Name
1	Battery
2	2-inch Thermal Printer
3	Air Vent for Hot air
4	Flash
5	Camera
6	Battery Latch
7	Speaker
8	Stylus

Left Side View



No.	Part Name
1	USB port
2	Headphone Jack

Status Indicators



No.	Indicator
1	Power ON
2	Wireless Activation
3	Battery Charge

SIM Connectors



No.	Part Name
1	Battery Connector
2	Micro SD Connector
3	3G / 2G SIM Connector

## B. Modularized Parts

The UHD has two main accessory modules, giving two variants for the UHD. The accessories attach to the right of the device.

### Financial Inclusion Module (FI Variant)

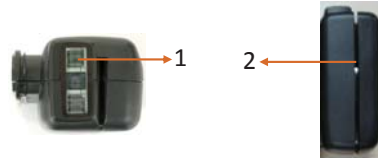
The Financial Module consists of



No.	Part Name
1	Contact Smart Card Reader with SAM support (IC Card)
2	Contactless Smart Card Reader (RFID)
3	Finger Print Sensor

### Sales Force Automation Module (SFAvariant)

The Sales Force Automation module consists of



No.	Part Name
1	Barcode Scanner
2	Magnetic Strip Reader

## C. Docking Station

### Top View



No.	Part Name
1	Second Battery Pack Charging Area
2	Docking Connector for UHD
3	Status Indicators

### Front View



No.	Part Name
1	Docking Connector
2	Battery Connector for Charging
3	VGA connector
4	Serial Port Connector
5	Power Supply Connector
6	LAN Connector
7	USB Connectors

### Status Indicators



No.	Part Name
1	Docking Indicator
2	Battery Charging Indicator

## D. Accessories



Power Charger



Battery

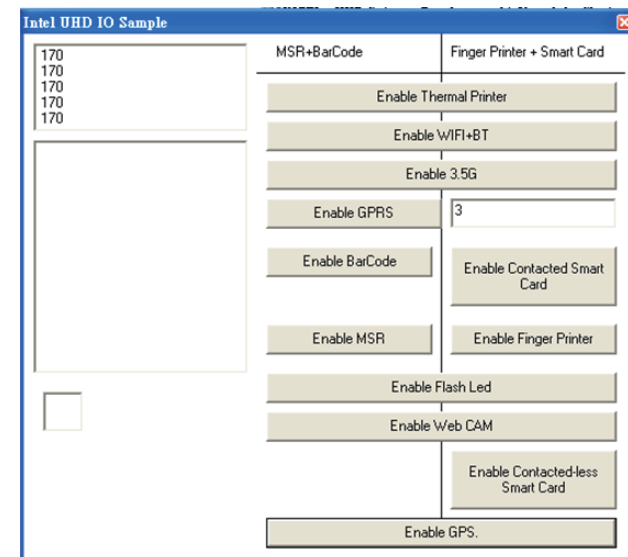
## II. Software Installation

### A: To enable device functions:

Please run file name " UHD\_demo\_GPS.exe " in order to activate the peripheral functions of the device.

### B: Integration of customized system:

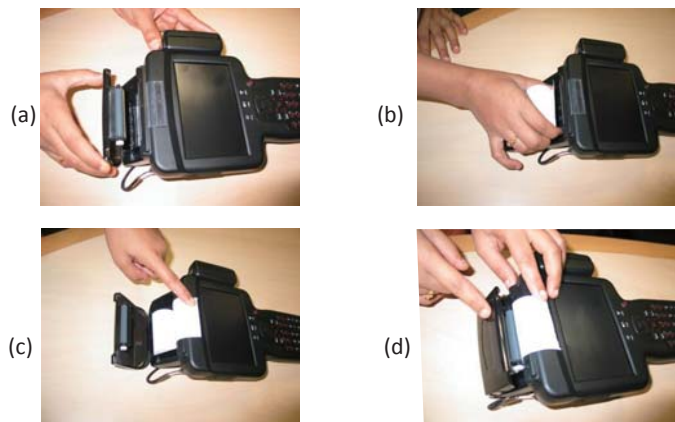
Please refer to file name " Intel - Software Development Kit knowledge Sharing Delivery2 " in order to integrate your customized system.



### III. Basic Operations

#### A. Loading a Paper Roll for Thermal Printer

1. Unlock the printer cover and rotate the cover towards top side and then open it. (a)
2. Place the paper roll into the housing as shown in the figure (b)
3. Hold the extreme end of the paper roll by keeping a few centimeters of thermal paper out of the paper roller of the printer cover (c)
4. Ensure paper in its proper place and gently close the printer cover (d)



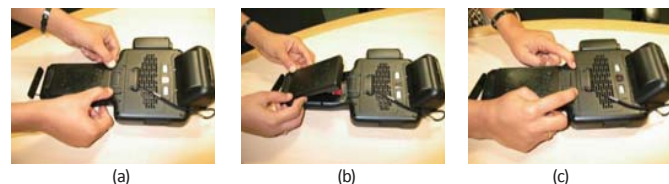
#### B. Battery Charging

##### Battery removal:

Pick up the unit and turn it bottom up to see the battery pack. Move the latch towards the top (a) of the UHD and lift the battery pack out of the unit (b). You need not shutdown the device, a pre-installed non-replaceable backup battery for duration of three (3) minutes will be available.

##### Battery insertion:

Place the battery into the rear tabs first and gently swing down to place into the slot (b). Move the latch towards the rear side of the device (c) to lock the battery into its place.

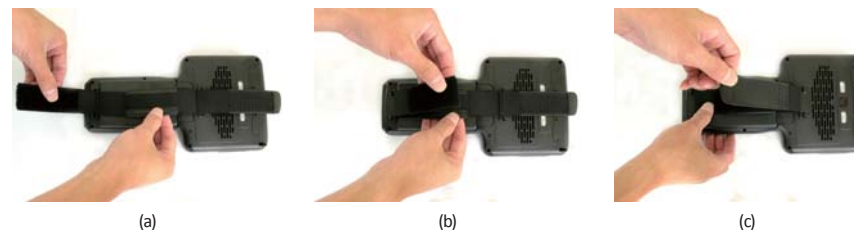


##### CAUTION

1. Do not dispose the battery pack into fire.
2. For any reason you intend to remove and place aside the battery pack, make sure that the gold plated metal contact part does not come in touch with any metal objects.

#### C. Hand Strap Installation

1. Bottom up the device.
2. Put one side strap through the ring at the lower side, and the other side of strap through the ring at the upper side.
3. After leveling up and down both side, please stick each side onto the pre-fixed Velcro .



#### D. Power ON/OFF & Hot Keys

##### Turning ON the device

Open the device, press the power button. The Power indicator LED will glow once the device is powered ON

##### Turning OFF the device

If you are not going to use the device for a while, it is recommended to turn OFF its power. Before turning down the power first close all the programs, and shut down the operating system.

You may also press the Power Button for four seconds to shutdown the device. The device will not shut down gracefully and all the unsaved data will be lost. Hence it is not recommended to use this method unless absolutely necessary.

##### Suspend Mode

The device supports Suspend Mode through Standby and Hibernate features, which is operating system.

Make sure that relevant Power Management Options are enabled in the Operating System.

##### Hot Keys

The device implements the following hot-key combinations as default. Further hot-keys may also be defined using additional software programs.

Key Combination	Functional description
Fn + Esc	Press this key combination to increase the brightness of the LCD
Fn + Del	Press this key combination to decrease the brightness of the LCD
Fn + <--	Press this key combination to decrease the volume of the audio
Fn + TAB	Press this key combination to increase the volume of the audio






##### CAUTION

After turning off your device, leave the LCD panel open for a while if the device has been used for an extended period of time. This allows the interior of your device to cool off.

# IV. Troubleshooting

## A. Status Indicator Description

Device	Name	LED Color	Location	Description of Behavior
Main Device	Power LED 	Green	On the device	Green : Device is ON Blank : Device is OFF
	Battery LED 	Green	On the device	Green : Battery is charging BLINKING : Device is ON & Battery Charging is Low than 10%. Blank : Either of the conditions below is true a. Battery is 100% charged b. Device is not turned ON
	Wireless Activation LED 	Green	On the device	Green : Any one of the wireless interfaces is enabled Blank : All the Wireless interfaces are disabled
Docking Station	Docking Indicator	Orange	On the Docking Station	Orange : DC power is available and the device is docked Blank : Either of the conditions below is true a. Device is not docked b. Device is docked but docking station is not powered
	Battery Charging Indicator	Bi Color Green & RED	On the Docking Station	GREEN : Either of the below conditions are true a. DC is plugged and No Battery is present b. DC is plugged and Battery is 100% charged RED : Battery is present and is charging OFF : No Power to the docking station

## B. Basic Troubleshooting

Problem	Remedy
No display on the screen	<ol style="list-style-type: none"> <li>Check if the device is turned ON. Power LED on the UHD must be glowing.</li> <li>Check if the Battery is present.</li> <li>If on AC power, make sure the Power Cord is plugged into the outlet appropriately.</li> <li>Plug other appliance to the outlet &amp; check if power from outlet is present.</li> </ol>
LAN controller is not detected by the Operating System	<p>Follow the steps as mentioned below.</p> <ol style="list-style-type: none"> <li>Enable the LAN by using the demo utility provided with the device.</li> <li>Close the utility and reboot the device.</li> <li>OS will detect the LAN controller and configure LAN controller.</li> <li>If the above steps do not work, re-install the driver of the LAN controller and repeat the process mentioned above.</li> </ol>
Docking Station devices are not detected	<ol style="list-style-type: none"> <li>Check if the Docking station is powered ON.</li> <li>Check if the device is docked properly to the docking station. The Docking indicator must glow.</li> </ol>
Printer is not printing	<ol style="list-style-type: none"> <li>Check if the Paper roll is exhausted.</li> <li>Enable the printer by using the utility provided with the device. Go to Control Panel-&gt; Printers and Faxes. Open the properties of the printer and print a test page to verify the operation of the device.</li> </ol>
Hot Swap Battery	A pre-installed non-replaceable backup battery to support hot swap function can sustain for three (3) minutes of operation. This backup battery is charged as long as the main battery is 100% charged.